

The **SYSTEM** RANGE



LEE 85



LEE 100



SW150

The logo consists of the word "LEE" in white, bold, sans-serif capital letters inside a green rounded rectangle, followed by the number "85" in large, bold, black sans-serif capital letters. The entire logo is set against a white circular background with a green border.

LEE85

The LEE85 Filter System has been engineered specifically for photographers with smaller bodied cameras and lenses who need to travel light but don't want to compromise on quality and filter versatility. Packed with features and made from precision engineered aluminium, the LEE85 holder is small, lightweight and compact.

As with all of LEE's filter systems, the LEE85 can easily be attached, adjusted and locked to the lens with just a finger and a thumb. The system works with a full range of filters including a clip-on polariser, Neutral Density Filters, as well as the Little, Big and Super Stoppers. Photographers can use up to three filters plus a polariser with the LEE85.

The LEE85 System is available in a range of four kits: Discover, Develop, Aspire and Deluxe.

These offer an attractive set of choices, from entry level up to a complete all-inclusive system kit. The four kits also include three adaptor rings (72mm, 67mm and 58mm) so the system can be used straight out of the box.

Adaptor rings are available for the following lens-thread sizes which can also be purchased separately: 37mm, 37.5mm, 39mm, 40mm, 40.5mm, 43mm, 46mm, 49mm, 52mm, 55mm, 58mm, 60mm, 62mm, 67mm and 72mm.



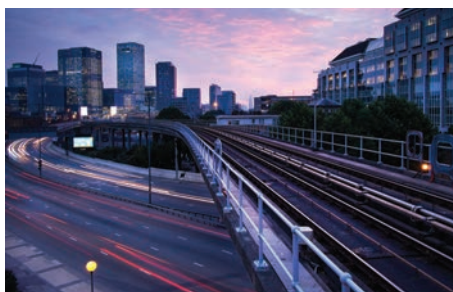
Re-imaging Filters

The LEE85 ND Graduated and Standard filters feature a grip tab, which increases the visible area and keeps finger prints off the filter zone. The LEE85 Stoppers also feature useful thumb guides to easily position the Stopper squarely within the holder.



LEE85 System Pouch

The LEE85 System Pouch holds a LEE85 Filter Holder, Polariser and Filters and is included in each LEE85 Kit. Inside it features a handy concertina design with one slot per filter. It comes with three strap options: over-the-shoulder strap, belt loop, or tripod strap.



LEE85 Discover Kit

The LEE85 Discover Kit is an excellent starting point for those looking to use filters. With a filter holder, one ND Graduated filter, a system pouch and 3 popular size adaptor rings included – this gives you everything you need to get started out of the box.

Enhance your images

Think filters are the sole preserve of the landscape photographer? Think again. They are just as relevant to a gritty urban scene as they are to a beautiful seascape. A quick turn of a polariser and your blue sky takes on an appealing intensity. Use an ND grad to reduce contrast between sky and foreground.

You can even use the Little, Big and Super Stopper to extend your exposure by either six, ten or fifteen stops. What does this mean for the photographer? Less time in front of the computer – more time taking pictures.

Take control of your photographs with the LEE85 Filter System.

LEE 100



Need a filter set-up that is suitable for every photographic eventuality, be that using a neutral density grad to reduce the contrast across a scene or a polariser to intensify the blue in the sky? Then the LEE100 Filter System is where you begin. A one-size-fits-all system, it is compatible with DSLRs, as well as medium-format and large-format cameras.

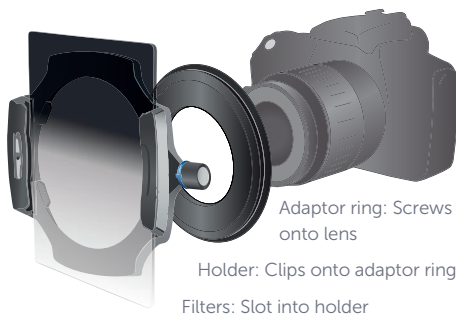
How to get started

You need only three things to get started: the adaptor ring, the filter holder, and the filters.

The adaptor ring comes in a range of thread sizes from 49mm to 105mm and simply screws to the front of your camera's lens.

Precision engineered from injection-moulded composite materials, the LEE100 holder is rigid, strong and lightweight. The holder comes with a protective slip pouch, modular filter-guide blocks with one, two and three filter slots allowing multiple filters to be used simultaneously, and a guide block removal tool. Once assembled, the filter holder clips on to the adaptor ring by pulling the spring release and snapping the holder on – you are then ready to drop in your chosen filters.

The filters are available in a vast range of types and colours – everything from neutral density to polariser to the classic yellow, orange and red filters so loved by the black-and-white photographer.

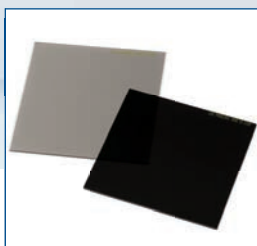


The most popular filters in the LEE100 range are manufactured from a lightweight, optically superior polymeric material. Each filter is handmade by our team of skilled technicians in the LEE Filters UK factory. These resin filters are generally available as two types: graduated (half colour, half clear) and standard (all colour).

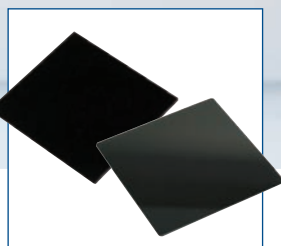
Because the filters slide up and down with the holder, the photographer is able to control the precise placement of the point of graduation – be that at the top, middle or bottom of the frame. In addition, the filter holder has a multi-function locking dial which allows the holder



The polariser features an integral ring with two clips, and simply snaps on to the front of the holder.



0.6 to 4.5 ProGlass IRND
Filter range



The Little, Big and Super
Stopper (long exposure filters).

to be rotated independently and locked in a specific position to suit ND grads and other filters. This is invaluable when using neutral density grads with a composition in which the horizon is at an angle.



To position the graduation line, slide the filter up and down in the holder.

LEE100 Landscape Kit

The Landscape Kit is an excellent starting point for landscape photography, with a filter holder and one filter, all you need is an adaptor ring to get underway.



Glass filters

Some photographers prefer to use glass filters, and LEE Filters recognises this with its ProGlass IRND range. These filters set a whole new standard in high quality glass neutral-density filters. ProGlass IRND filters are precisely neutral, with virtually no colour shift and extremely accurate stop values. And because they block both infrared and ultraviolet pollution, blacks remain pure and clean, while colours are crisp, punchy and vibrant.

Also manufactured from glass are the polarising filter and Little, Big and Super Stopper. The LEE100 Polariser is constructed using a lightweight, high-transmission polariser glass, with a subtle warm tone to help intensify natural colours. It features an integral ring with two clips, and simply snaps on to the front of the LEE100 filter holder, allowing you to use it in conjunction with all your favourite filters. The LEE100 Polariser can be rotated independently of any other filters that are being used.

The Little, Big and Super Stopper were launched in response to the vogue for ultra-long exposures. These filters increase the length of an exposure by approximately six, ten or fifteen stops. As an example, if your meter reading suggests an exposure of 1/4sec at f/8, fitting the Big Stopper increases that exposure to 256 seconds – just under four and a half minutes.

SW150



It's now possible to use filters with a more extensive range of ultra-wideangle lenses than ever before, thanks to the innovative SW150 Mark II filter system

Landscape photographers have long understood the benefits of ultra-wideangle lenses, but their design constraints made the use of filters virtually impossible. Now, the SW150 Mark II filter holder opens up opportunities for the creative use of filters, without the need to be concerned about vignetting.

The design of the SW150 Mark II has been adapted from its predecessor and is now not only compatible with LEE's range of neutral density graduated and standard filters, but also the polariser, ProGlass IRND and Little, Big and Super Stopper.

The SW150 Mark II fits to the lens via a lens adaptor that needs to be purchased separately from the filter holder. Each adaptor consists of a front ring, a compression ring and a locking ring that have been specifically designed for each particular lens. When fitted, they form a collar that remains on the lens at all times.

Due to the size of the front element of ultra-wideangle lenses, the filters for the

Lens compatibility

The SW150 Mark II system is now suitable for use with the following lenses

Canon EF 14mm f2.8 L II USM

Canon EF 11-24mm f4L USM

Please note that due to the physical size of this lens, and the extremely wide angle of view, the SW150 filter holder will vignette at the widest angles. To avoid this we recommend using a minimum focal length of 13.5mm when using the filter holder with two filter slots and 12.5mm when using the holder with one filter slot.

Canon TS-E 17mm

This adaptor enables photographers to use the lens' full range of tilt & shift functions

Fujifilm XF 8-16mm f2.8

Nikon AF-S Nikkor 14-24mm f/2.8G ED

Nikon 14mm f2.8 D AF ED

Nikon PC NIKKOR 19mm f/4E ED Tilt-Shift

Olympus 7-14mm Pro f2.8

Pentax FA 15-30mm f2.8 ED SDM WR

This lens doesn't have its own Adaptor, however the Tamron 15-30mm Adaptor fits perfectly.

Samyang 14mm f/2.8 ED AS IF UMC

Sigma 12-24mm f4.5-5.6 II DG HSM

Sigma 12-24mm f4 Art DG HSM

Please note that due to the physical size of this lens, and the extremely wide angle of view, the SW150 filter holder will vignette at the widest angles. To avoid this we recommend using a minimum focal length of 15mm when using the filter holder with two filter slots and 13.5mm when using the holder with one filter slot.

Sigma 14mm f1.8 DG Art

Sigma 14-24mm f2.8 Art

Please note that vignetting may occur at close focussing distances with a 2-slot configuration.

Sigma 20mm f1.4 HSM Art

Tamron 15-30mm f2.8 SP Di VC USD

Tokina AT-X 16-28mm f/2.8 PRO FX



The SW150 filter range now includes neutral density filters, a polariser, ProGlass IRND and the Little, Big and Super Stopper.

SW150 system are larger than those in the standard 100mm range: graduated filters are 150 x 170mm, whilst standard filters, the Little, Big and Super Stopper, ProGlass IRND and the Polariser are 150 x 150mm.

The SW150 filter holder comes assembled with two filter slots, enabling you to use neutral density graduated filters in combination with other filters.



The SW150 MKII filter holder comes assembled with two filter slots and a Lightshield.

Lightshield

The SW150 Mark II filter holder comes fitted with a Lightshield. The shield helps to prevent unwanted back reflections and creates a light tight seal enabling the use of the Little, Big and Super Stopper. Photographers who already own the SW150 Mark I can purchase the Lightshield separately and retro fit it to their existing SW150 filter holder.



Screw-in Lens Adaptors

SW150 screw-in lens adaptors allow the SW150 filter holder to be fitted to lenses with a screw-in filter thread.

SW150 screw-in adaptors are available for the following lens-thread sizes:

72mm, 77mm, 82mm, 86mm, 95mm and 105mm



LEE Filters

A PANAVISION COMPANY

www.leefilters.com